

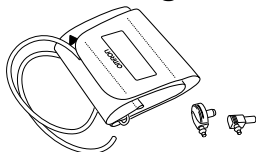
CW Wide Range Cuff

Wide range cuff
Brassard large
M+ Manschette
Bracciale large


Manguito adaptable
Medium Plus manchete
Универсальная манжета
كفة ذات نطاق واسع

• <i>Instructions for use</i>	2	EN
• <i>Mode d'emploi</i>	4	FR
• <i>Gebrauchsanweisung</i>	6	DE
• <i>Istruzioni per l'uso</i>	8	IT
• <i>Instrucciones de uso</i>	10	ES
• <i>Gebruiksaanwijzing</i>	12	NL
• <i>Инструкция для пользователя</i>	14	RU
• <i>إرشادات الاستخدام</i>		AR

CW Wide Range Cuff (HEM-RML30)



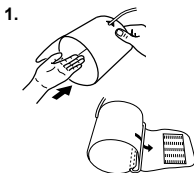
Thank you for purchasing the OMRON Wide Range Cuff. Arm circumference for this cuff is 22 to 42 centimeters. OMRON Wide Range Cuff can be connected to various OMRON Blood Pressure Monitors. Please refer to the original instruction manual of your Blood Pressure Monitor. Please check your present product as to which plug you must use. Connect the correct air plug to the air tube.

 Please read this instruction manual thoroughly before using the unit. Please keep for future reference.

Caution

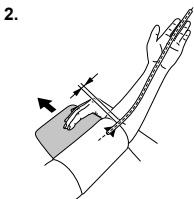
- Use only the approved Blood Pressure Monitor for this cuff.
- Do not wash the cuff or make it wet.

Instructions for use



1. Put your left arm through the cuff loop.

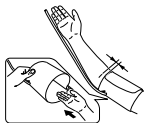
Note: If the cuff is not assembled, pass the end of the cuff furthest from the tubing through the metal D-ring to form a loop. The smooth cloth should be on the inside of the cuff loop.



2. Position the arm correctly.
- 1) The air tube should run down the inside of your forearm and be in line with your middle finger.
 - 2) The bottom of the cuff should be approximately 1 to 2 cm above your elbow.
 - 3) Apply the cuff to your upper arm so that the marker (arrow under tube) is centered on the middle of your inner arm and points down the inside of the arm.

Notes:

- Do not place the cuff over thick clothes and do not roll up your sleeve if it is too tight.
- Align the cuff with the height of your heart (breast height). If necessary use a pillow or cushion.



3.



Maintenance

Taking measurements on the right arm

Apply the cuff so that the air tube is at the side of your elbow.

- Be careful not to rest your arm on the air tube, or otherwise restrict the flow of air to the cuff.
- The cuff should be 1 to 2 cm above the elbow.

3. When the cuff is positioned correctly, close the fabric fastener **FIRMLY**.

- Stains on the cuff can be carefully removed using a moist cloth and soapy water.
- Do not fold the cuff or air tube together too tightly and do not crease them.
- Do not store the cuff in the following situations:
 - If the cuff is wet.
 - Locations exposed to extreme temperatures, humidity, direct sunlight, dust or corrosive vapours.
 - Locations exposed to vibrations, shocks or where it will be at an angle.



This cuff fulfils the provisions of EC directive 93/42/EEC (Medical Device Directive).

Manufacturer 	OMRON HEALTHCARE Co., Ltd. 53, Kunotsubo, Terado-cho, Muko, Kyoto, 617-0002 JAPAN		
EU-representative <table border="1" data-bbox="60 929 231 998"> <tr> <td data-bbox="60 929 142 998">EC</td> <td data-bbox="142 929 231 998">REP</td> </tr> </table>	EC	REP	OMRON HEALTHCARE EUROPE B.V. Scorpius 33, 2132 LR Hoofddorp, THE NETHERLANDS www.omron-healthcare.com
EC	REP		
Production facility	OMRON (DALIAN) CO., LTD Dalian, CHINA		
Subsidiary	OMRON HEALTHCARE UK LTD. Opal Drive, Fox Milne, Milton Keynes, MK15 0DG, U.K.		
	OMRON MEDIZINTECHNIK HANDELSGESELLSCHAFT mbH John-Deere-Str. 81a, 68163 Mannheim, GERMANY www.omron-medizintechnik.de		
	OMRON SANTÉ FRANCE SAS 14, rue de Lisbonne, 93561 Rosny-sous-Bois Cedex, FRANCE		

EN

Made in China

This OMRON product is produced under the strict quality system of OMRON HEALTHCARE Co., Ltd., JAPAN.